

4-INS-310



INSTALLATION, OPERATION AND CARE MANUAL

REMEMBER TO COMPLETE THE ONLINE
WARRANTY REGISTRATION TO
RECEIVE YOUR FULL TWO YEAR WARRANTY.

WARRANTY

All Scientific equipment comes with a standard ONE year warranty, The 1 Year Extended Warranty is only valid for customers who have registered their warranty online at www.scientific.co.za within the first year after making their purchase.

MANUFACTURED
IN SOUTH AFRICA





ALL SCIENTIFIC EQUIPMENT COMES WITH A TWO
YEAR WARRANTY ON COMPONENTS AND
DEFECTIVE WORKMANSHIP - Ts & Cs APPLY.

REGISTER ONLINE TODAY

- Register your warranty on-line at www.scientific.co.za today and learn how to get the best out of your Scientific product.

NO WEB ACCESS?

- If you do not have access to the Web, register by completing this form and Email it to the Scientific head office in South Africa. Email: sales@scientific.co.za

ONLY COMPLETE IF YOU DO NOT HAVE WEB ACCESS

Company _____

Name _____

Surname _____

Telephone _____

Cellphone _____

Email Address _____

Country _____

Postal address _____

Scientific products purchased _____

Product Code (see box label) _____

Serial number (see back of machine) _____

INTENDED USE

- | | | |
|---------------------------------------|--|---|
| <input type="checkbox"/> Agriculture | <input type="checkbox"/> Genetics | <input type="checkbox"/> Pharmaceutical Physics |
| <input type="checkbox"/> Automotive | <input type="checkbox"/> Industrial | <input type="checkbox"/> Power Generation |
| <input type="checkbox"/> Biochemistry | <input type="checkbox"/> Medical | <input type="checkbox"/> Special Metals |
| <input type="checkbox"/> Botony | <input type="checkbox"/> Microbiology | <input type="checkbox"/> Sugar |
| <input type="checkbox"/> Chemistry | <input type="checkbox"/> Mining | <input type="checkbox"/> Water |
| <input type="checkbox"/> Cosmetics | <input type="checkbox"/> Nuclear | <input type="checkbox"/> Zoology |
| <input type="checkbox"/> Electronics | <input type="checkbox"/> Paper/Packaging | <input type="checkbox"/> Other (Specify): _____ |
| <input type="checkbox"/> Food | <input type="checkbox"/> Petrochemical | |



LIMITED WARRANTY

The manufacturer guarantees that this unit is free from defect in materials and workmanship when it leaves the factory and undertakes to replace or repair the unit if it proves defective in normal use or during servicing for a period of 1(one) year from the date of original installation and is for the benefit of the original purchaser only. The liability under this warranty is limited to repairing the defective unit or any part of the unit provided it is sent carriage paid to an authorized dealer. All other Warranties ,expressed or implied , statutory or otherwise, including without limitations any implied Warranty of Merchantability or fitness for purpose are excluded .The Seller shall in no event be liable for direct,indirect or consequential damages in connection with the products.

This unit is at all times to be used according to the instruction manual and for its normal purpose.

This Warranty is not effective if damage occurs because of accident, carelessness,improper installation,lack of proper set-up,supervision when required or if the equipment is installed or operated in any manner contrary to the installation and operating instructions. In these cases,repairs will be made at a reasonable cost. Work performed by unauthorized personnel or unauthorized service agencies voids this Warranty.

GLASSWARE DRIER



**INSTALLATION OPERATION AND CARE OF
GLASSWARE DRIER
MODEL: 310 R01**

UNPACKING

Unpack the product and check for any damage incurred during transit. This should be reported to the responsible carrier, railway or postal authority, and a request for a damage report should be made.



THESE INSTRUCTIONS MUST BE FOLLOWED FOR US TO GUARANTEE OUR FULL SUPPORT OF YOUR CLAIM FOR PROTECTING AGAINST LOSS FROM CONCEALED DAMAGE. THE FORM FOR FILING SUCH A CLAIM WILL BE PROVIDED BY THE CARRIER.

PRODUCT DESCRIPTION

- This glassware drier is fitted with two wire drying racks with a total volume capacity of 180 litres.
- The unit features in variable heat control with a pilot light indicating when the unit is energized.
- The unit is constructed of 304 stainless steel.
- Sliding removable glass doors are fitted on both sides for convenient loading and unloading.

NOTES

NOTES

**WARNING****Burn Hazard.**

Do not touch hot, liquid or heating surfaces while equipment is heating or operating

Hot surfaces and liquid can burn skin. Allow the hot surfaces to cool before handling

CLEANING

BEFORE CLEANING THE UNIT, DISCONNECT THE UNIT FROM THE MAINS !

1. Clean the outside of the unit using a damp cloth with soapy water.
2. The stainless steel inner chamber should be cleaned with a damp cloth immersed in soapy water.
3. Under no circumstances should steel wool be used.
4. Avoid aggressive acids since this will discolour the stainless steel.
5. It is normal for the stainless steel to adapt a slightly yellow discolouration when exposed to continuous high temperature use.
6. The units are designed for continuous operating under normal conditions. Periodic maintenance other than cleaning is not required.



CLEAN THE STAINLESS STEEL PARTS WITH WATER AND SOAP. AVOID THE USE OF DETERGENTS CONTAINING ABRASIVE SUBSTANCES. ALWAYS RINSE WELL AND DRY CAREFULLY AFTER CLEANING. DO NOT USE PRODUCTS CONTAINING AGGRESSIVE CHEMICALS, ACIDS OR PRODUCTS WITH CHLORINE TO CLEAN THE STAINLESS STEEL EVEN IF DILUTED



WARNING

Electric Shock Hazard.

Keep water and other liquids from entering the inside of the equipment. Liquid inside the equipment could cause an electrical shock

Do not spray water or cleaning products. Liquid could contact the electrical components and cause a short circuit or an electrical shock. Do not use equipment if power cord is damaged or has been modified

SAFETY

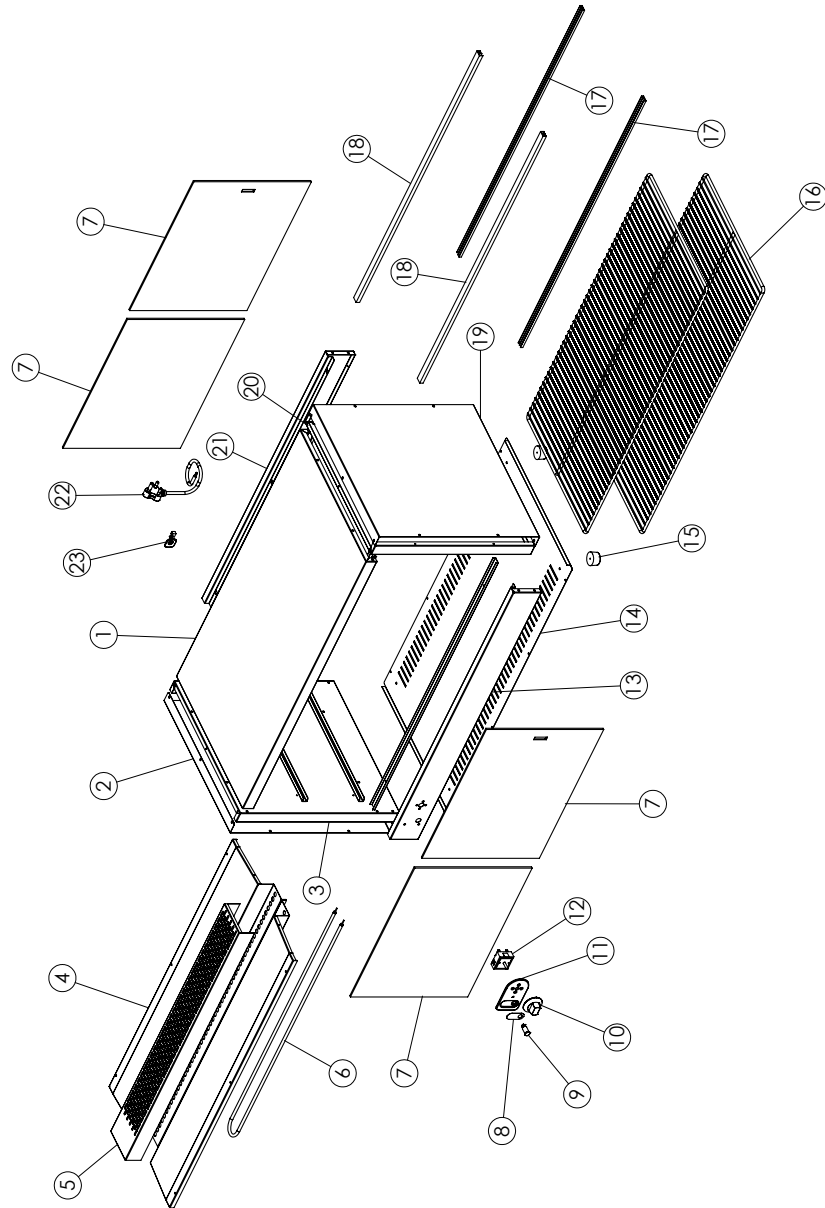
READ ALL INSTRUCTIONS BEFORE USE. FAILURE TO FOLLOW THESE PRECAUTIONS COULD RESULT IN INJURY TO YOURSELF AND OTHERS

1. Use the Glassware Drier on an individual 15A mains outlet only. **DO NOT OVERLOAD THE CIRCUIT.**
2. Ensure that the equipment and the power supply cord does not come into contact with hot surfaces.
3. This unit is only to be used by properly trained laboratory staff.
4. If the supply cord is damaged, it must be replaced with a new cord assembly available from the suppliers agent.
5. Use only earthed outlets matching the serial plate voltage.
6. Have equipment installed by a qualified personnel in accordance with local codes and ordinances.
7. Use equipment in a flat level position.
8. Do not operate if equipment has been damaged or is malfunctioning in any way.
9. These units are designed to run only on alternating current (A.C.) **DO NOT CONNECT TO DIRECT CURRENT (D.C)**

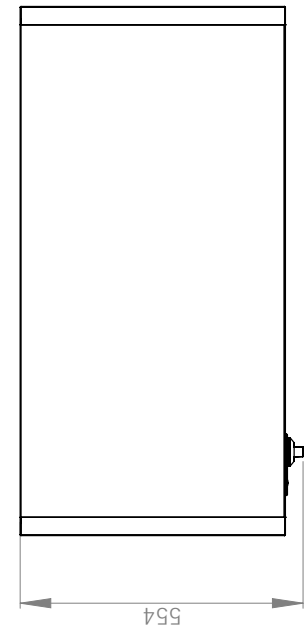
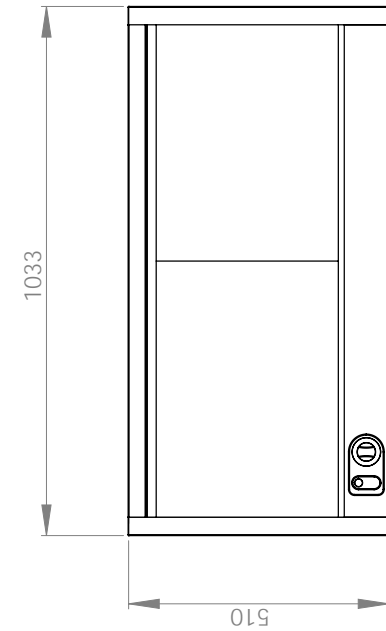
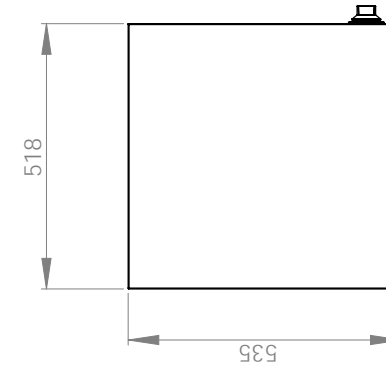
GLASS WARE DRYER MODEL CODE :310 R00

Part No.	Description
1	TOP COVER
2	LEFT SIDE COVER
3	LEFT SIDE PANEL
4	DRIP COVER
5	ELEMENT COVER
6	ELEMENT
7	GLASS DOOR
8	CP INSERT
9	PILOT LIGHT
10	KNOB
11	FACIA
12	REGULATOR
13	CONTROL BOTTOM SIDE PANEL
14	BOTTOM COVER
15	FOOT
16	WIRE SHELF
17	PVC PLASTIC PROFILE RUNNER BOTTOM (WHITE)
18	PVC PLASTIC PROFILE RUNNER TOP (BLACK)
19	RIGHT SIDE COVER
20	RIGHT SIDE PANEL
21	CABLE ENTRY BOTTOM SIDE PANEL
22	POWER CORD
23	CABLE GRIP (STRAIN RELIEF KA1/1)

EXPLODED DIAGRAM
MODEL: GLASSWARE DRIER
MODEL CODE: 310 R01



POSITIONING DIAGRAM
GLASS DRIER
MODEL: 310 R01



ELECTRICAL CONNECTION INFORMATION

MODEL	DESCRIPTION	VOLTS (V/Hz)	POWER (WATTS)	VOLUME LITRE	SHELF SIZE (mm)
310	GLASSWARE DRIER	230/50	1000	180	960 x 462



THE CONTROL COMPARTMENT OF THIS UNIT CONTAINS DANGEROUS VOLTAGES. MAINTENANCE AND SERVICING REQUIRING THE REMOVAL OF ANY PANELS OR COVERS SHOULD BE DONE BY QUALIFIED SERVICE PERSONNEL ONLY.



IT IS ESSENTIAL TO MAKE SURE THAT THE INCOMING VOLTAGE IS THE SAME AS THE RATED VOLTAGE OF THE OF THE UNIT AS FOUND ON THE SERIAL PLATE. THE SERIAL PLATE IS LOCATED AT THE REAR OF THE UNIT ADJACENT TO THE INCOMING CABLE ENTRY.

WIRING DIAGRAM MODEL: GLASSWARE DRIER MODEL CODE: 310

LEGEND	DESCRIPTION	PART NUMBER
ER	ENERGY REGULATOR	1-ER-URS0012
E1	ELEMENT -1000W/230V	5-1000W-BS
H1	CONTROL PILOT LIGHT	1-PL-GP

