

4-INS-401



## INSTALLATION, OPERATION AND CARE MANUAL

REMEMBER TO COMPLETE THE ONLINE  
WARRANTY REGISTRATION TO  
RECEIVE YOUR FULL TWO YEAR WARRANTY.

### WARRANTY

All Scientific equipment comes with a standard ONE year warranty, The 1 Year Extended Warranty is only valid for customers who have registered their warranty online at [www.scientific.co.za](http://www.scientific.co.za) within the first year after making their purchase.

MANUFACTURED  
IN SOUTH AFRICA





ALL SCIENTIFIC EQUIPMENT COMES WITH A TWO  
YEAR WARRANTY ON COMPONENTS AND  
DEFECTIVE WORKMANSHIP - Ts & Cs APPLY.

### REGISTER ONLINE TODAY

- Register your warranty on-line at [www.scientific.co.za](http://www.scientific.co.za) today and learn how to get the best out of your Scientific product.

### NO WEB ACCESS?

- If you do not have access to the Web, register by completing this form and Email it to the Scientific head office in South Africa. Email: [sales@scientific.co.za](mailto:sales@scientific.co.za)

### ONLY COMPLETE IF YOU DO NOT HAVE WEB ACCESS

Company \_\_\_\_\_

Name \_\_\_\_\_

Surname \_\_\_\_\_

Telephone \_\_\_\_\_

Cellphone \_\_\_\_\_

Email Address \_\_\_\_\_

Country \_\_\_\_\_

Postal address \_\_\_\_\_

\_\_\_\_\_

\_\_\_\_\_

Scientific products purchased \_\_\_\_\_

Product Code (see box label) \_\_\_\_\_

Serial number (see back of machine) \_\_\_\_\_

### INTENDED USE

- |                                       |                                          |                                                 |
|---------------------------------------|------------------------------------------|-------------------------------------------------|
| <input type="checkbox"/> Agriculture  | <input type="checkbox"/> Genetics        | <input type="checkbox"/> Pharmaceutical Physics |
| <input type="checkbox"/> Automotive   | <input type="checkbox"/> Industrial      | <input type="checkbox"/> Power Generation       |
| <input type="checkbox"/> Biochemistry | <input type="checkbox"/> Medical         | <input type="checkbox"/> Special Metals         |
| <input type="checkbox"/> Botony       | <input type="checkbox"/> Microbiology    | <input type="checkbox"/> Sugar                  |
| <input type="checkbox"/> Chemistry    | <input type="checkbox"/> Mining          | <input type="checkbox"/> Water                  |
| <input type="checkbox"/> Cosmetics    | <input type="checkbox"/> Nuclear         | <input type="checkbox"/> Zoology                |
| <input type="checkbox"/> Electronics  | <input type="checkbox"/> Paper/Packaging | <input type="checkbox"/> Other (Specify): _____ |
| <input type="checkbox"/> Food         | <input type="checkbox"/> Petrochemical   | _____                                           |



ALL SCIENTIFIC EQUIPMENT COMES WITH A TWO  
YEAR WARRANTY ON COMPONENTS AND  
DEFECTIVE WORKMANSHIP - Ts & Cs APPLY.

## LIMITED WARRANTY

The manufacturer guarantees that this unit is free from defect in materials and workmanship when it leaves the factory and undertakes to replace or repair the unit if it proves defective in normal use or during servicing for a period of 1(one) year from the date of original installation and is for the benefit of the original purchaser only. The liability under this warranty is limited to repairing the defective unit or any part of the unit provided it is sent carriage paid to an authorized dealer. All other Warranties ,expressed or implied , statutory or otherwise, including without limitations any implied Warranty of Merchantability or fitness for purpose are excluded .The Seller shall in no event be liable for direct,indirect or consequential damages in connection with the products.

This unit is at all times to be used according to the instruction manual and for its normal purpose.

This Warranty is not effective if damage occurs because of accident, carelessness,improper installation,lack of proper set-up,supervision when required or if the equipment is installed or operated in any manner contrary to the installation and operating instructions. In these cases,repairs will be made at a reasonable cost. Work performed by unauthorized personnel or unauthorized service agencies voids this Warranty.

## STEAM BATH



**INSTALLATION OPERATION AND CARE OF  
STEAM BATH  
MODEL: 401/402**

## UNPACKING

Unpack the product and check for any damage incurred during transit. This should be reported to the responsible carrier, railway or postal authority, and a request for a damage report should be made.



THESE INSTRUCTIONS MUST BE FOLLOWED FOR US TO GUARANTEE OUR FULL SUPPORT OF YOUR CLAIM FOR PROTECTING AGAINST LOSS FROM CONCEALED DAMAGE. THE FORM FOR FILING SUCH A CLAIM WILL BE PROVIDED BY THE CARRIER.

## PRODUCT DESCRIPTION

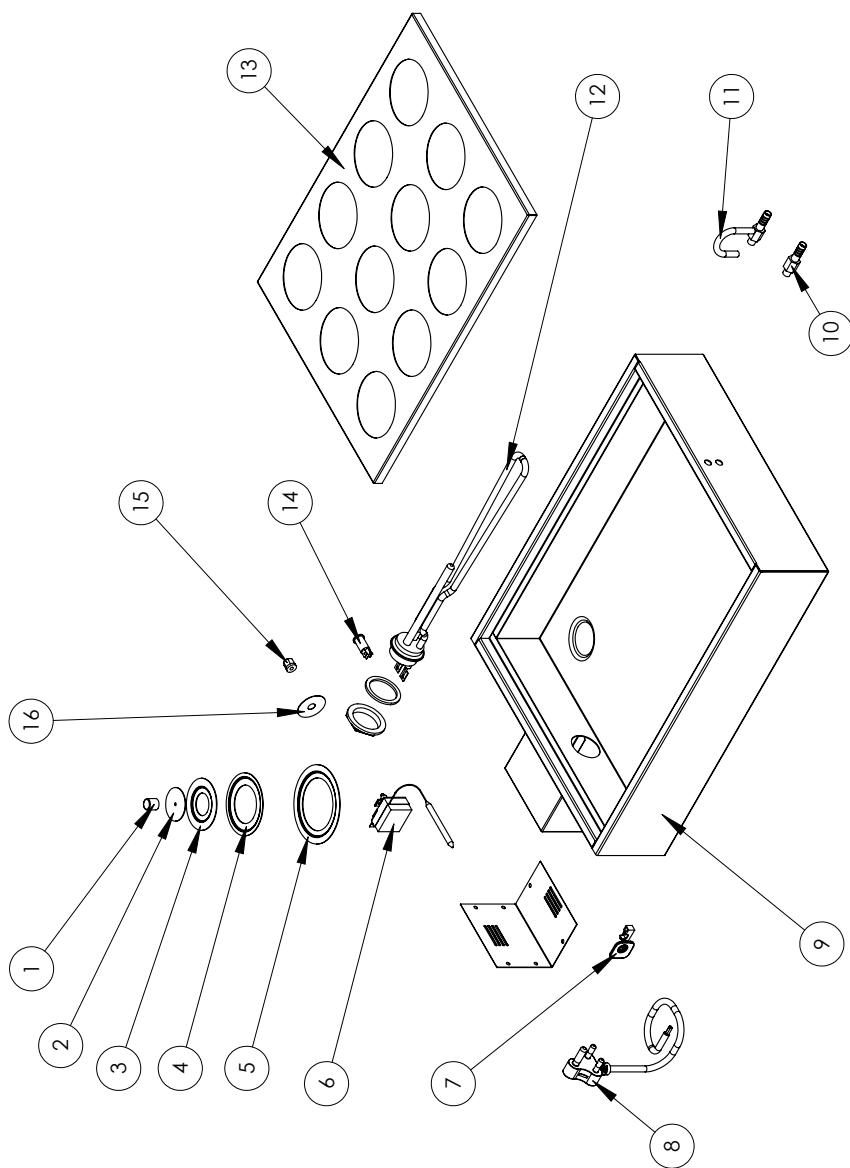
## GENERAL INSTALLATION AND OPERATION INFORMATION

- Install the unit in the most convenient location for ease of cleaning, maintenance and general operation.
- Ensure that the surface is level.
- If the appliance is to be positioned in close proximity to a wall, partition, etc, it is recommended that they are of non-combustible heat insulating material, and the closest attention paid to fire prevention regulations.
- The units are provided with a simple device for automatic control of water level.
- The manual reset safety thermostat protects the element should the bath run dry.

## MODEL : 12 STATION STEAM BATH MODEL CODE : 402

Part No.	Description
1	RING KNOB
2	CENTRE RING
3	65MM RING
4	85MM RING
5	105MM RING
6	THERMOSTAT
7	CABLE GRIP
8	POWER CORD
9	TANK ASSEMBLY
10	STEAMBATH INLET CONTROL
11	STEAMBATH LEVEL CONTROL
12	ELEMENT 2000W 230V
13	12 STATION STEAMBATH TRAY
14	PILOT LIGHT
15	SAFETY CAP
16	SAFETY FACIA

**EXPLODED DIAGRAM  
STEAM BATH  
MODEL: 402**



## WARNING

**Burn Hazard.**

Do not touch hot, liquid or heating surfaces while equipment is heating or operating

Hot surfaces and liquid can burn skin. Allow the hot surfaces to cool before handling

## CLEANING

BEFORE CLEANING THE UNIT, DISCONNECT THE POWER PLUG FROM THE MAINS SOCKET!

- Clean the unit using a damp cloth with soapy water.
- Do not submerge in water or subject the unit to water spray.
- The steam bath is designed for continuous operation. Periodic maintenance is not required.



CLEAN THE STAINLESS STEEL PARTS WITH WATER AND SOAP. AVOID THE USE OF DETERGENTS CONTAINING ABRASIVE SUBSTANCES. ALWAYS RINSE WELL AND DRY CAREFULLY AFTER CLEANING. DO NOT USE PRODUCTS CONTAINING AGGRESSIVE CHEMICALS, ACIDS OR PRODUCTS WITH CHLORINE TO CLEAN THE STAINLESS STEEL EVEN IF DILUTED



## WARNING

### Electric Shock Hazard.

Keep water and other liquids from entering the inside of the equipment. Liquid inside the equipment could cause an electrical shock

Do not spray water or cleaning products. Liquid could contact the electrical components and cause a short circuit or an electrical shock. Do not use equipment if power cord is damaged or has been modified

## SAFETY

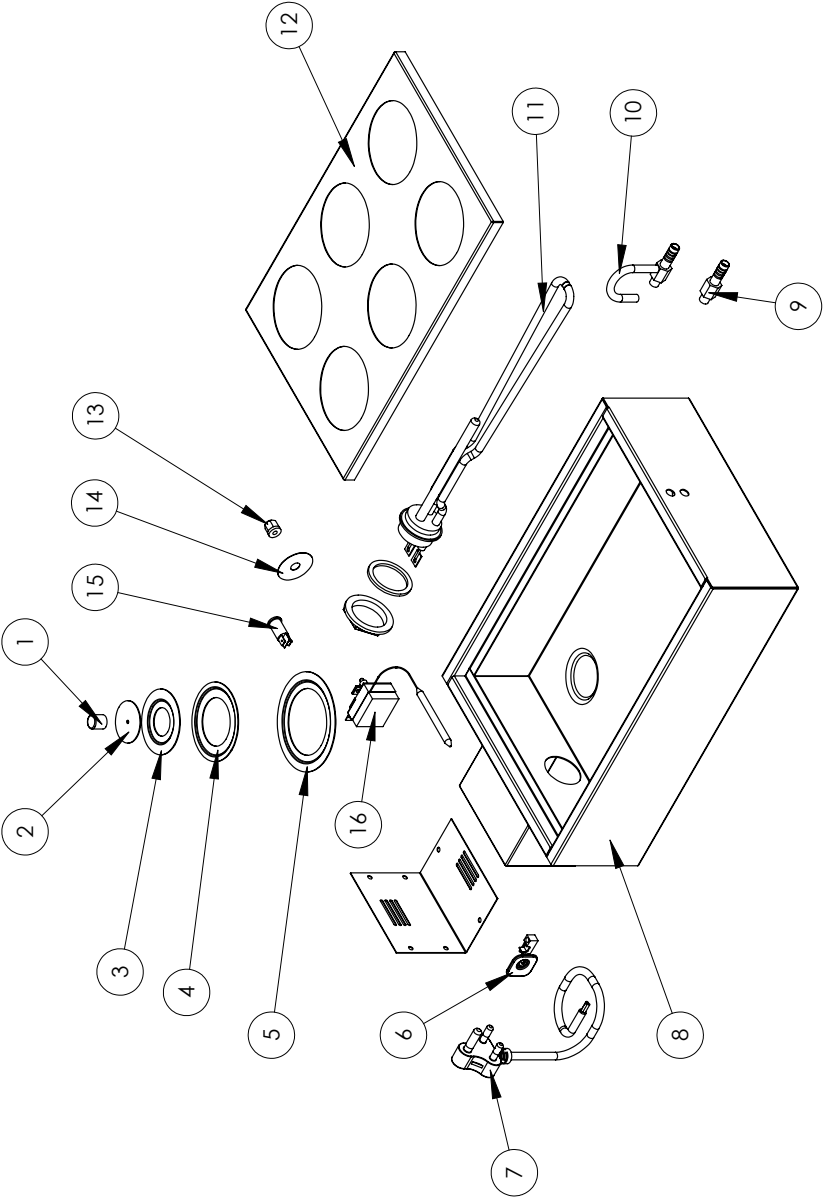
### READ ALL INSTRUCTIONS BEFORE USE. FAILURE TO FOLLOW THESE PRECAUTIONS COULD RESULT IN INJURY TO YOURSELF AND OTHERS

1. Use the steam bath on an individual 15A mains outlet only. **DO NOT OVERLOAD THE CIRCUIT.**
2. Ensure that the equipment and the power supply cord does not come into contact with hot surfaces.
3. This unit is only to be used by properly trained laboratory staff.
4. If the supply cord is damaged, it must be replaced with a new cord assembly available from the suppliers agent.
5. Use only earthed outlets matching the serial plate voltage.
6. Have equipment installed by a qualified personnel in accordance with local codes and ordinances.
7. Use equipment in a flat level position.
8. Do not operate if equipment has been damaged or is malfunctioning in any way.
9. These units are designed to run only on alternating current (A.C.) **DO NOT CONNECT TO DIRECT CURRENT (D.C)**

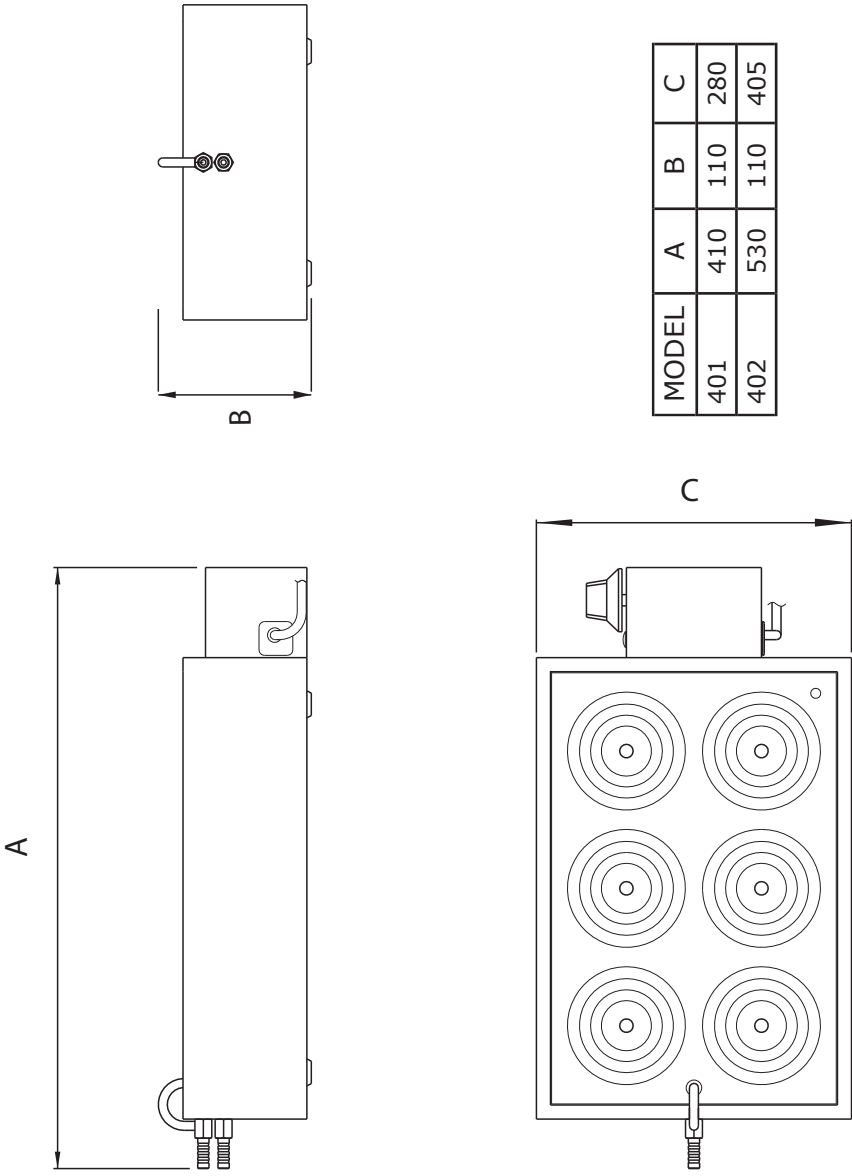
## MODEL : 6 STATION STEAM BATH MODEL CODE : 401

Part No.	Description
1	RING KNOB
2	CENTRE RING
3	65MM RING
4	85MM RING
5	105MM RING
6	CABLE GRIP
7	POWER CORD
8	TANK ASSEMBLY
9	STEAMBATH INLET CONTROL
10	STEAMBATH LEVEL CONTROL
11	ELEMENT 2000W 230V
12	6 STATION STEAMBATH TRAY
13	SAFETY CAP
14	SAFETY FACIA
15	PILOT LIGHT
16	THERMOSTAT

**EXPLODED DIAGRAM  
STEAM BATH  
MODEL: 401**



**POSITIONING DIAGRAM  
STEAM BATH  
MODEL: 401/402**



ELECTRICAL CONNECTION INFORMATION

MODEL	DESCRIPTION	VOLTS (V/Hz)	POWER (WATTS)
401	6 STATION STEAM BATH	230/50	2000
402	12 STATION STEAM BATH	230/50	2000



THE CONTROL COMPARTMENT OF THIS UNIT CONTAINS DANGEROUS VOLTAGES. MAINTENANCE AND SERVICING REQUIRING THE REMOVAL OF ANY PANELS OR COVERS SHOULD BE DONE BY QUALIFIED SERVICE PERSONNEL ONLY.



IT IS ESSENTIAL TO MAKE SURE THAT THE INCOMING VOLTAGE IS THE SAME AS THE RATED VOLTAGE OF THE OF THE UNIT AS FOUND ON THE SERIAL PLATE. THE SERIAL PLATE IS LOCATED AT THE REAR OF THE UNIT ADJACENT TO THE INCOMING CABLE ENTRY.

WIRING DIAGRAM  
MODEL: STEAM BATH  
MODEL CODE: 401/402

LEGEND	DESCRIPTION	PART NUMBER
B1	CONTROL THERMOSTAT	1-THERM-URB0012
H1	PILOT LIGHT	1-PL-GP
E1/E2	ELEMENT 1000W/230V	5-2000W-401

