



INSTALLATION, OPERATION AND CARE MANUAL

REMEMBER TO COMPLETE THE ONLINE
WARRANTY REGISTRATION



**ALL SCIENTECH EQUIPMENT COMES WITH A ONE
YEAR WARRANTY ON COMPONENTS AND
DEFECTIVE WORKMANSHIP**



REGISTER ONLINE TODAY

- ❑ Register your warranty on-line at www.scientific.co.za today and learn how to get the best out of your Scientech product.

NO WEB ACCESS?

- ❑ If you do not have access to the Web, register by completing this form and Email it to the Scientific head office in South Africa. Email: sales@scientific.co.za

ONLY COMPLETE IF YOU DO NOT HAVE WEB ACCESS

Company _____

Name _____

Surname _____

Telephone _____

Cellphone _____

Email Address _____

Country _____

Postal address _____

Scientech products purchased _____

Product Code (see box label) _____

Serial number (see back of machine) _____

INTENDED USE

- | | | |
|---------------------------------------|--|---|
| <input type="checkbox"/> Agriculture | <input type="checkbox"/> Genetics | <input type="checkbox"/> Pharmaceutical Physics |
| <input type="checkbox"/> Automotive | <input type="checkbox"/> Industrial | <input type="checkbox"/> Power Generation |
| <input type="checkbox"/> Biochemistry | <input type="checkbox"/> Medical | <input type="checkbox"/> Special Metals |
| <input type="checkbox"/> Botony | <input type="checkbox"/> Microbiology | <input type="checkbox"/> Sugar |
| <input type="checkbox"/> Chemistry | <input type="checkbox"/> Mining | <input type="checkbox"/> Water |
| <input type="checkbox"/> Cosmetics | <input type="checkbox"/> Nuclear | <input type="checkbox"/> Zoology |
| <input type="checkbox"/> Electronics | <input type="checkbox"/> Paper/Packaging | <input type="checkbox"/> Other (Specify): _____ |
| <input type="checkbox"/> Food | <input type="checkbox"/> Petrochemical | |



**ALL SCIENTECH EQUIPMENT COMES WITH A ONE
YEAR WARRANTY ON COMPONENTS AND
DEFECTIVE WORKMANSHIP**

OVERHEAD STIRRER 20 LITRE

LIMITED WARRANTY

The manufacturer guarantees that this unit is free from defect in materials and workmanship when it leaves the factory and undertakes to replace or repair the unit if it proves defective in normal use or during servicing for a period of 1(one) year. The date of original installation and is for the benefit of the original purchaser only. The liability under this warranty is limited to repairing the defective unit or any part of the unit provided it is sent carriage paid to an authorized dealer. All other Warranties ,expressed or implied , statutory or otherwise, including without limitations any implied Warranty of Merchantability or fitness for purpose are excluded .The Seller shall in no event be liable for direct,indirect or consequential damages in connection with the products.

This unit is at all times to be used according to the instruction manual and for its normal purpose.

This Warranty is not effective if damage occurs because of accident, carelessness,improper installation,lack of proper set-up,supervision when required or if the equipment is installed or operated in any manner contrary to the installation and operating instructions. In these cases,repairs will be made at a reasonable cost. Work performed by unauthorized personnel or unauthorized service agencies voids this Warranty.



**INSTALLATION OPERATION AND CARE OF
OVERHEAD STIRRER
MODELS: 720**

UNPACKING

1

10

Unpack the product and check for any damage incurred during transit. This should be reported to the responsible carrier, railway or postal authority, and a request for a damage report should be made.



THESE INSTRUCTIONS MUST BE FOLLOWED FOR US TO GUARANTEE OUR FULL SUPPORT OF YOUR CLAIM FOR PROTECTING AGAINST LOSS FROM CONCEALED DAMAGE. THE FORM FOR FILING SUCH A CLAIM WILL BE PROVIDED BY THE CARRIER.

GENERAL INSTALLATION AND OPERATION INSTRUCTIONS

1. Position the overhead stirrer on a clean non slip level surface.
2. Gradually increase or decrease the speed if there is any movement in the the liquid conatainer.
3. Do not operate the unit in explosive atmospheres.
4. Do not use flammable or hazardous substances in these units.

OPERATING INSTRUCTION

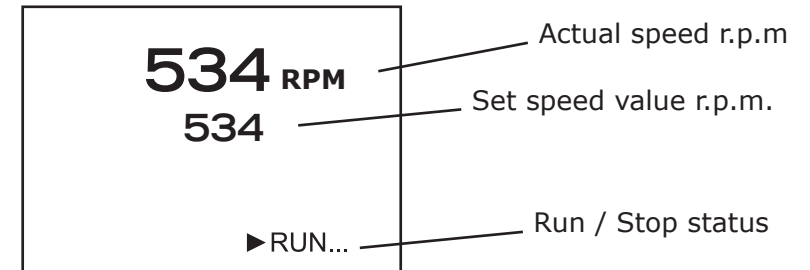
The unit is designed for mixing liquids in schools, laboratories or commercial factories. It s not intended for domestic use.

Setting the rotation speed.

1. Plug the power supply into the mains power supply. connect the power supply cord into the socket provided on the left side of the unit.
2. Switch the rocker switch mounted on the front panel to the "on" position.
3. Press the rotation speed knob once, the illuminated display will show " - SP - ". rotate the knob clock wise to increase the speed, the speed value will be displayed. Press the knob again to lock the speed.

Setting the rotation speed cont.

4. The display will indicate three lines. The set value speed indicated in small digits below the larger current speed digits. At the bottom right the status i.e RUN or STOP.



5. To start the stirring motion, press the start / stop button. The spindle will start turning and increase in speed until the set r.p.m. is reached. The display will show " ►RUN..."
6. To stop the stirring motion, press the start / stop button. The spindle will reduce speed and stop. The display will show " ►STOP..."

ELECTRICAL CONNECTION INFORMATION

MODEL	CAPACITY (Litres)	VOLTS (V /Hz)	POWER (W)	SPEED RANGE (R.P.M)
720	20	240/50	60	100 - 2500 (+1)

CLEANING

1. Always ensure that the unit is disconnected from the main power supply before cleaning.
2. This unit should not be cleaned with a water jet or immersed in water. Use only a damp cloth or sponge dipped in soapy water.
3. Wipe off the unit with a dry cloth and wait at least a half an hour before re-connecting to the main power outlet.



IT IS ESSENTIAL TO MAKE SURE THAT THE INCOMING VOLTAGE IS THE SAME AS THE RATED VOLTAGE OF THE UNIT AS FOUND ON THE SERIAL PLATE. THE SERIAL PLATE IS LOCATED AT THE REAR OF THE UNIT ADJACENT TO THE INCOMING CABLE ENTRY.



DO NOT USE WITH FLAMMABLE OR HAZARDOUS LIQUIDS.

PARTS LEGEND

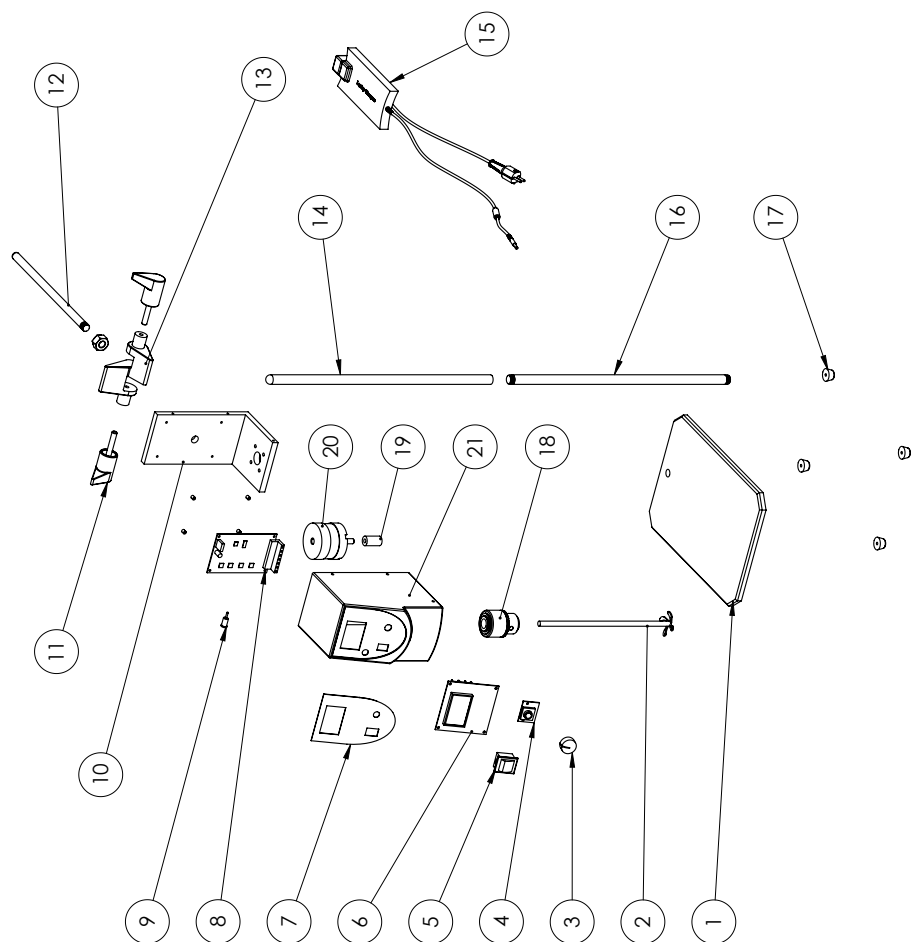
MODEL: OVERHEAD STIRRER

MODEL CODE: 720

ITEM No.	Description
1	STEEL BASE
2	IMPELLAR SHAFT
3	SPEED CONTROL KNOB
4	PCB SWITCH START STOP
5	ROCKER SWITCH
6	PCB SPEED DISPLAY
7	FASCIA PANEL
8	PCB MAIN CONTROL
9	POWER SOCKET
10	STEEL CHASSIS
11	ADJUSTER CLAMP KNOB
12	REAR CHROME BAR
13	ADUSTER CLAMP BODY
14	TOP VERTICAL CHROME BAR
15	POWER SUPPLY
16	BOTTOM VERTICAL CHROME BAR
17	SMALL RUBBER FEET
18	CHUCK
19	MOTOR SHAFT SPACER
20	MOTOR
21	BODY

EXPLODED DIAGRAM
MODEL: OVERHEAD STIRRER
MODEL CODE: 720

7



SAFETY

4

READ ALL INSTRUCTIONS BEFORE USE. FAILURE TO FOLLOW THESE PRECAUTIONS COULD RESULT IN INJURY TO YOURSELF AND OTHERS

1. Use the Overhead stirrer on an individual 15A mains outlet only. **DO NOT OVERLOAD THE CIRCUIT.**
2. Ensure that the equipment and the power supply cord does not come into contact with hot surfaces.
3. This unit is only to be used by properly trained laboratory staff.
4. If the supply cord is damaged, it must be replaced with a new cord assembly available from the suppliers agent.
5. Use only earthed outlets matching the serial plate voltage.
6. Have equipment installed by a qualified personnel in accordance with local codes and ordinances.
7. Use equipment in a flat level position.
8. The equipment may be hot, even though the control panel is not on.
9. Do not operate if equipment has been damaged or is malfunctioning in any way.
10. These units are designed to run only on alternating current (A.C.) **DO NOT CONNECT TO DIRECT CURRENT (D.C)**

WIRING DIAGRAM
MODEL: OVERHEAD STIRRER
MODEL CODE: 720

POSITIONING DIAGRAM
OVERHEAD STIRRER MODEL 720

