

4-INS-730



**INSTALLATION,
OPERATION AND
CARE MANUAL**

REMEMBER TO COMPLETE THE ONLINE
WARRANTY REGISTRATION

www.scientific.co.za

REGISTER ONLINE TODAY

- Register your warranty on-line at www.scientific.co.za today and learn how to get the best out of your Scientech product.

NO WEB ACCESS?

- If you do not have access to the Web, register by completing this form and Email it to the Scientific head office in South Africa. Email: sales@scientific.co.za

ONLY COMPLETE IF YOU DO NOT HAVE WEB ACCESS

Company _____

Name _____

Surname _____

Telephone _____

Cellphone _____

Email Address _____

Country _____

Postal address _____

Scientech products purchased _____

Product Code (see box label) _____

Serial number (see back of machine) _____

INTENDED USE

- | | | |
|---------------------------------------|------------------------------------------|-------------------------------------------------|
| <input type="checkbox"/> Agriculture | <input type="checkbox"/> Genetics | <input type="checkbox"/> Pharmaceutical Physics |
| <input type="checkbox"/> Automotive | <input type="checkbox"/> Industrial | <input type="checkbox"/> Power Generation |
| <input type="checkbox"/> Biochemistry | <input type="checkbox"/> Medical | <input type="checkbox"/> Special Metals |
| <input type="checkbox"/> Botony | <input type="checkbox"/> Microbiology | <input type="checkbox"/> Sugar |
| <input type="checkbox"/> Chemistry | <input type="checkbox"/> Mining | <input type="checkbox"/> Water |
| <input type="checkbox"/> Cosmetics | <input type="checkbox"/> Nuclear | <input type="checkbox"/> Zoology |
| <input type="checkbox"/> Electronics | <input type="checkbox"/> Paper/Packaging | <input type="checkbox"/> Other (Specify): _____ |
| <input type="checkbox"/> Food | <input type="checkbox"/> Petrochemical | _____ |



**ALL SCIENTECH EQUIPMENT COMES WITH A ONE
YEAR WARRANTY ON COMPONENTS AND
DEFECTIVE WORKMANSHIP**



LIMITED WARRANTY

The manufacturer guarantees that this unit is free from defect in materials and workmanship when it leaves the factory and undertakes to replace or repair the unit if it proves defective in normal use or during servicing for a period of 1(one) year. The date of original installation and is for the benefit of the original purchaser only. The liability under this warranty is limited to repairing the defective unit or any part of the unit provided it is sent carriage paid to an authorized dealer. All other Warranties ,expressed or implied , statutory or otherwise, including without limitations any implied Warranty of Merchantability or fitness for purpose are excluded .The Seller shall in no event be liable for direct,indirect or consequential damages in connection with the products.

This unit is at all times to be used according to the instruction manual and for its normal purpose.

This Warranty is not effective if damage occurs because of accident, carelessness,improper installation,lack of proper set-up,supervision when required or if the equipment is installed or operated in any manner contrary to the installation and operating instructions. In these cases,repairs will be made at a reasonable cost. Work performed by unauthorized personnel or unauthorized service agencies voids this Warranty.

LABORATORY HOTPLATES

**INSTALLATION OPERATION AND CARE OF
LABORATORY HOTPLATES
MODELS: 730, 731 and 732**

UNPACKING

Unpack the product and check for any damage incurred during transit. This should be reported to the responsible carrier, railway or postal authority, and a request for a damage report should be made.



THESE INSTRUCTIONS MUST BE FOLLOWED FOR US TO GUARANTEE OUR FULL SUPPORT OF YOUR CLAIM FOR PROTECTING AGAINST LOSS FROM CONCEALED DAMAGE. THE FORM FOR FILING SUCH A CLAIM WILL BE PROVIDED BY THE CARRIER.

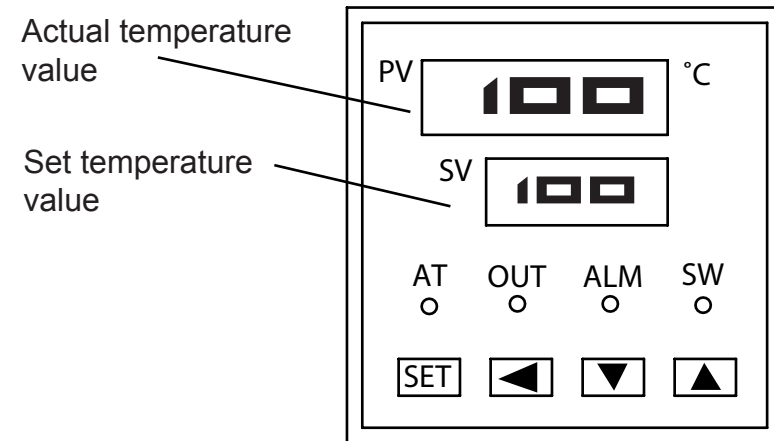
PRODUCT DESCRIPTION

These hotplates are general purpose hotplates that are robustly constructed and designed for continual usage. All Models are controlled by a digital controller which varies the power input to the elements enabling accurate control at lower surface temperature. The aluminium top plate ensures even temperature distribution. The digital controller display both set and actual plate temperature

GENERAL INSTALLATION AND OPERATION INFORMATION

1. Ensure that the unit is placed on a sturdy bench.
2. Install the unit away from combustible material and preferably at least 300mm away from the wall or adjacent surfaces.
3. Check that the mains voltage complies with the rated 220-240VAC 50Hz-15 amp supply voltage and plug into power socket.
4. To energize the heating elements press the mains power switch and set the desired temperature as follows:
 - i) press the set key to activate the digits on the controller. The digit will flash and can be advanced to the next position by pressing the shift key. The value can be increased or decreased by pressing the up or down arrow keys.
 - ii) After you have adjusted the set temperature, press the set key to lock the settings and start heating.

CONTROLLER DIAGRAM



5. The set temperature is displayed in the lower "SV" display window. The actual temperature is displayed in the upper "PV" window.
7. While the unit is heating up the small LED "out" is illuminated. Once the plate has reached the set temperature, this LED switches off.
8. The unit can operate to a maximum of 350°C.



WARNING

Burn Hazard.

Do not touch hot, liquid or heating surfaces while equipment is heating or operating

Hot surfaces and liquid can burn skin. Allow the hot surfaces to cool before handling

CLEANING

- Care should be taken when operating this appliance as hot surfaces are present which may cause burns.
- Ensure that the power supply cord does not come into contact with hot surfaces.
- It is recommended not to leave the unit in operation unattended.

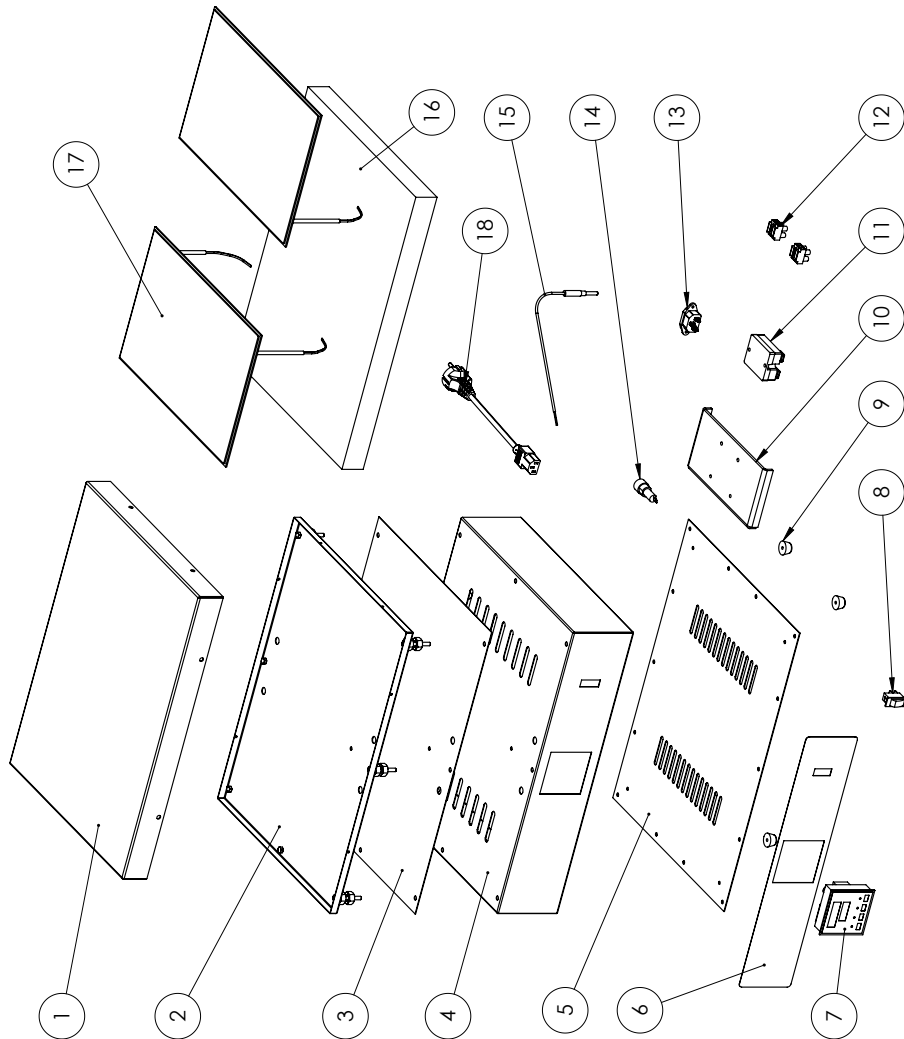


CLEAN WITH A DAMP CLOTH AND SOAP. AVOID THE USE OF DETERGENTS CONTAINING ABRASIVE SUBSTANCES. DRY CAREFULLY AFTER CLEANING. DO NOT USE PRODUCTS CONTAINING AGGRESSIVE CHEMICALS, ACIDS OR PRODUCTS WITH CHLORINE.

ALUMINIUM HOT PLATE MODEL CODE 730

ITEM No.	Description
1	ALUMINIUM TOP PLATE
2	CHASSIS PLATE
3	ALUMINIUM HEAT SHIELD
4	STEEL ENCLOSURE
5	BOTTOM PANEL
6	FASCIA PANEL LEXAN
7	DIGITAL CONTACTOR
8	ROCKER SWITCH ILLUMINATED
9	RUBBER FOOT
10	ALUMINIUM HEAT SINK
11	SOLID STATE RELAY 25A
12	TERMINAL BLOCK POLYAMIDE
13	IEC SOCKET SURFACE MOUNT
14	FUSE HOLDER
15	THERMOCOUPLE PROBE
16	INSULATION MATERIAL
17	HEATING ELEMENT 600W
18	POWER CORD IEC TYPE

EXPLODED DIAGRAM LABORATORY HOT PLATES



WARNING

Electric Shock Hazard.

Keep water and other liquids from entering the inside of the equipment. Liquid inside the equipment could cause an electrical shock.

Do not spray water or cleaning products. Liquid could contact the electrical components and cause a short circuit or an electrical shock. Do not use equipment if power cord is damaged or has been modified.

SAFETY

READ ALL INSTRUCTIONS BEFORE USE. FAILURE TO FOLLOW THESE PRECAUTIONS COULD RESULT IN INJURY TO YOURSELF AND OTHERS

1. Use the hot plate on an individual 15A mains outlet only. **DO NOT OVERLOAD THE CIRCUIT.**
2. Ensure that the equipment and the power supply cord does not come into contact with hot surfaces.
3. This unit is only to be used by properly trained laboratory staff.
4. If the supply cord is damaged, it must be replaced with a new cord assembly available from the suppliers agent.
5. Use only earthed outlets matching the serial plate voltage.
6. Have equipment installed by a qualified personnel in accordance with local codes and ordinances.
7. Use equipment in a flat level position.
8. Do not operate if equipment has been damaged or is malfunctioning in any way.
9. These units are designed to run only on alternating current (A.C.) **DO NOT CONNECT TO DIRECT CURRENT (D.C)**

ELECTRICAL AND TECHNICAL INFORMATION

MODEL	DESCRIPTION	VOLTS (V/Hz)	POWER (WATTS)
730	HOTPLATE 300mm	230/50	1200
731	HOTPLATE 450mm	230/50	1800
732	HOTPLATE 600mm	230/50	3000



THE CONTROL COMPARTMENT OF THIS UNIT CONTAINS DANGEROUS VOLTAGES. MAINTENANCE AND SERVICING REQUIRING THE REMOVAL OF ANY PANELS OR COVERS SHOULD BE DONE BY QUALIFIED SERVICE PERSONNEL ONLY.



IT IS ESSENTIAL TO MAKE SURE THAT THE INCOMING VOLTAGE IS THE SAME AS THE RATED VOLTAGE OF THE OF THE UNIT AS FOUND ON THE SERIAL PLATE. THE SERIAL PLATE IS LOCATED AT THE REAR OF THE UNIT ADJACENT TO THE INCOMING CABLE ENTRY.

**POSITIONING DIAGRAM
LABORATORY HOT PLATE
MODELS: 730/731/732**

